



# ***M/S SPLENDID***

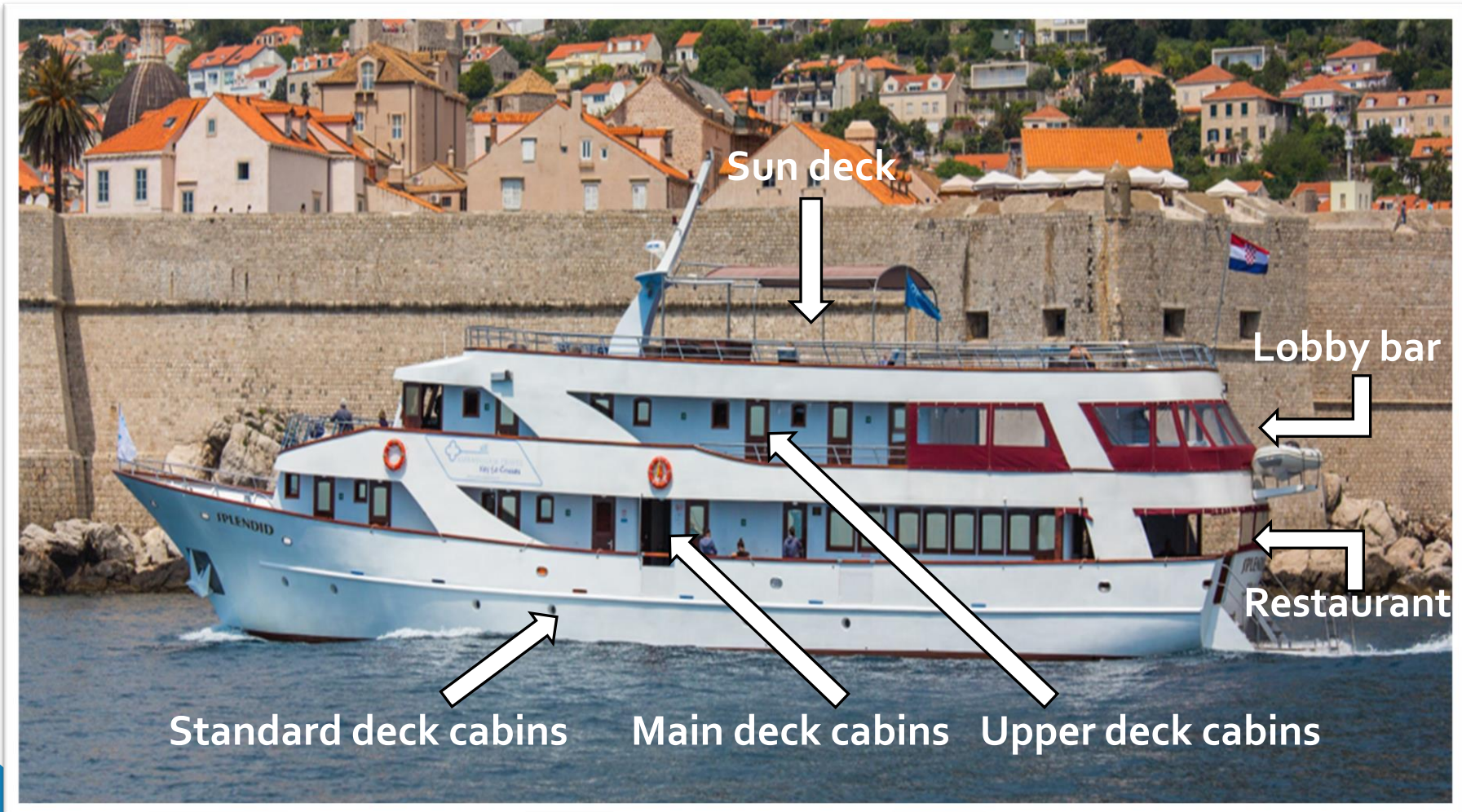
# Boat highlights

- **M/S Splendid** is a 38,50 m (125 ft. )long, 8 m (26,5 ft.) wide luxury yacht-like ship that will satisfy your refined expectations for a comfortable cruise along the Croatian Coast. Built for the season 2014 with latest state-of-the-art equipment and amenities, guaranteeing intimate cruise for all guests.
- M/S Splendid is simply ideal for your affordable Croatian cruise dream holiday!
- This ship will take you where the bigger vessels cannot go, navigating through the narrow waterways into the very hearts of bustling Mediterranean cities, anchoring in hidden Adriatic bays, docking in a small Dalmatian island ports.
- Forget the time-wasting disembarkation. With M/S Splendid the beauties and treasures of Croatian coast and islands are at your hand's reach, just as if you were cruising aboard your own private yacht!
- Closed Circuit Video surveillance, complete navigation equipment, fire alarm, smoke detectors, life rafts and tenders are there for your personal safety.



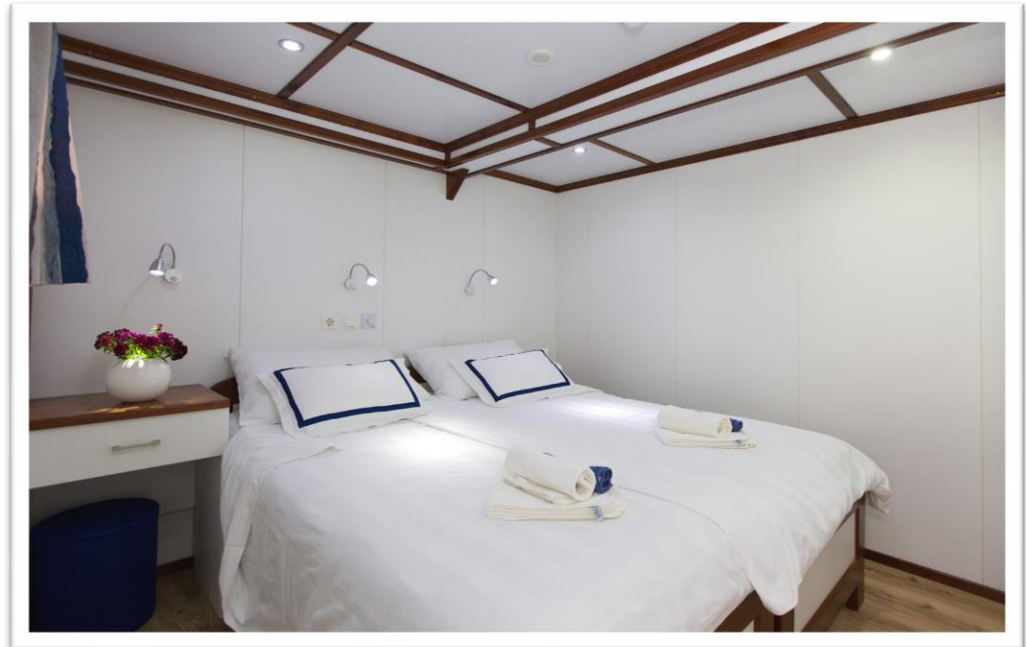
# Cabins

- All guest cabins are very comfortable, fully air-conditioned, with an independent ventilation system for fresh air all the time, conveniently designed as modern private ensembles, toilet and shower in the cabin.
- All cabins are equipped with beds in size 200x80 cm or 200x160 cm, with independent air conditioning control board, designed wallboards, working table and chair, mirror, night lamps, safe deposit box, radio, hairdryer, 220 V electric supply, lifejacket, wardrobe and luggage space under bed, as well as the latest safety and fire alarm and sound system for notification of a cruise manager or group leader.



## Upper deck cabin

- Cabins on the Upper deck can be twin or double bedded. There is one window in each cabin, which can be opened a little bit.
- There are individually controlled air-conditioning, a wardrobe in the room, hairdryer, a safe deposit box with key and enough space for your luggage under the bed.
- The cabins are equipped with their own private bathroom; including wc, shower, wash basin and bathroom necessities.
- Cabin sizes: 9-10 m<sup>2</sup>



## Main deck cabin

- Cabins on the Main Deck are situated at least one meter above sea level and can be twin, double or triple bedded (bunk bed). There is one window in each cabin, which can be opened a little bit.
- There are individually controlled air-conditioning, a wardrobe in the room, hairdryer, a safe deposit box with key and enough space for your luggage under the bed.
- The cabins are equipped with their own private bathroom; including wc, shower, wash basin and bathroom necessities.
- Cabin sizes: 9-10 m<sup>2</sup>



## Standard deck cabin

- Cabins on the Standard Deck are situated in the hull of the ship and can be twin or double bedded. There is one porthole in each cabin, which cannot be opened.
- There are individually controlled air-conditioning, a wardrobe in the room, hairdryer, a safe deposit box with key and enough space for your luggage under the bed.
- The cabins are equipped with their own private bathroom; including wc, shower, wash basin and bathroom necessities.
- Cabin sizes: 9-11 m<sup>2</sup>



# *Salon/Restaurant*

- *Fully air-conditioned salon-restaurant on the main deck with bar, big screen LCD TV, corner table for buffet breakfast, Wireless Internet, loud-speakers and audio-system for announcements by Captain or cruise manager, beautiful large windows for complete passenger's satisfaction.*



# Lobby bar

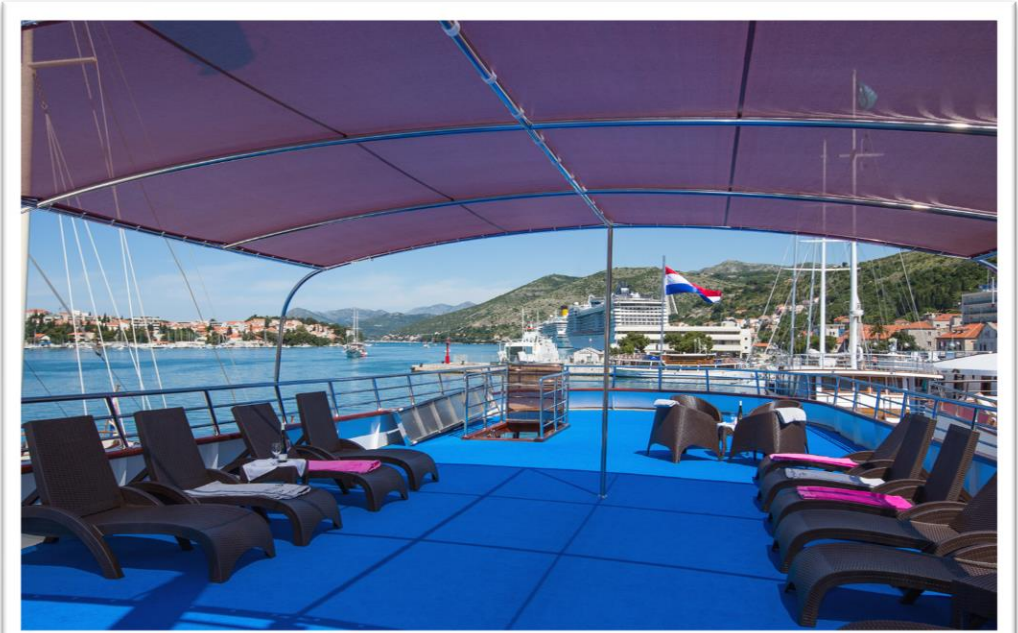
- *Outside fully covered terraces (one on upper and one on main deck) with sitting area, tables and chairs that can be closed with removable plastic windows (in case of winds) that are usually open for a breathtaking "sea view".*





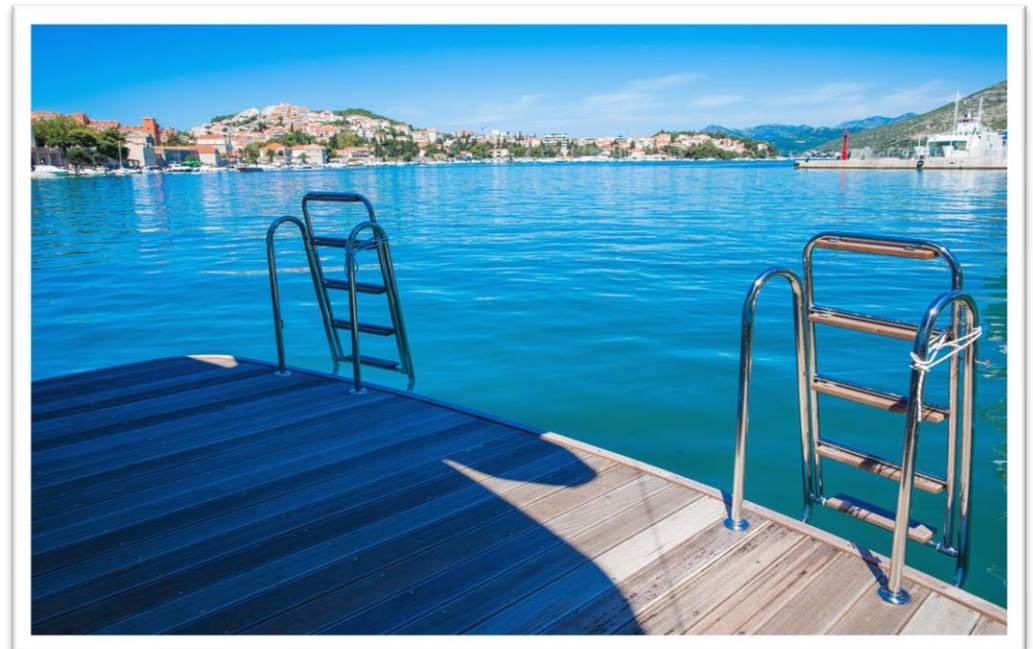
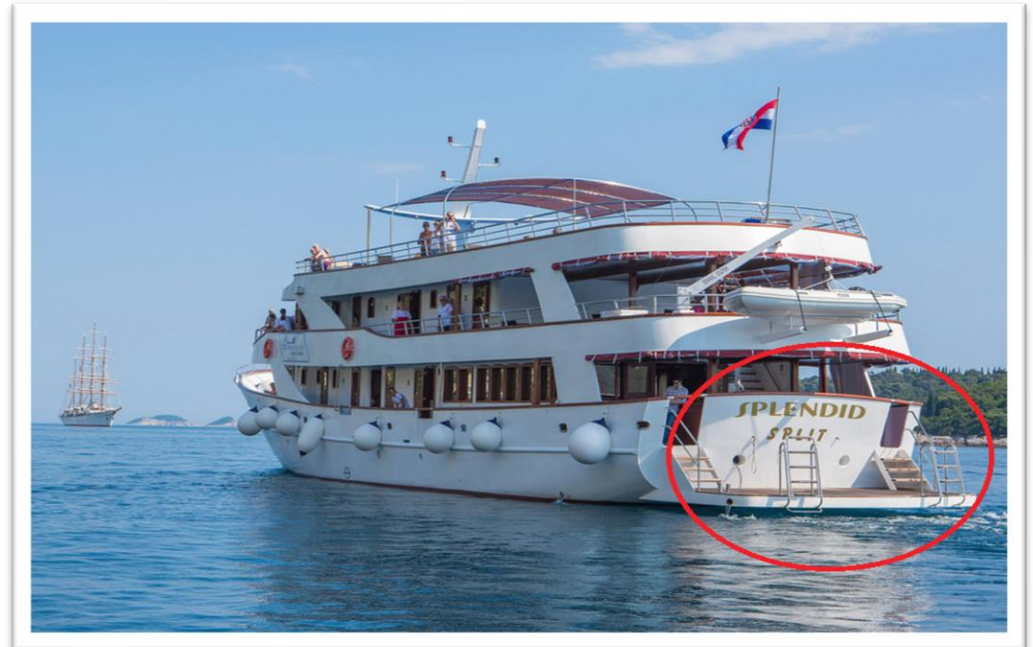
# Sun deck

- *On the high deck is a sun deck with sunbeds, tables and chairs for passengers, while part of a sun deck is shaded for clients' comfort.*
- *Here you can enjoy our Elegance Rooftop Jacuzzi designed to ensure an unforgettable cruise.*



# Swimming platform

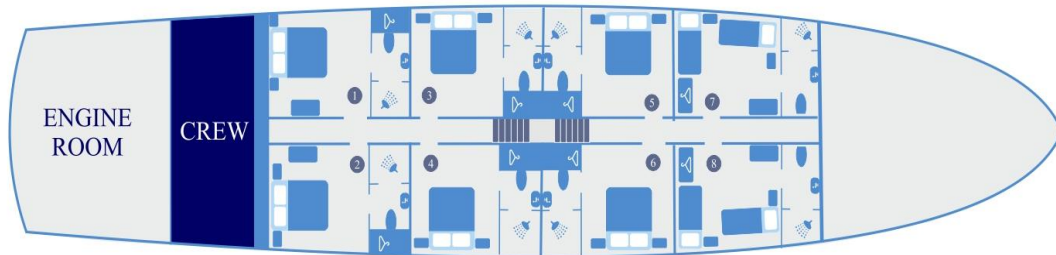
- *Ship has platform for swimming, 2 ladders with handholds for an easy access to the water and two outdoor showers and public toilettes.*
- *There are a lot of swim stops in the itinerary so you can enjoy swimming in beautiful Adriatic sea and discover secluded beaches.*



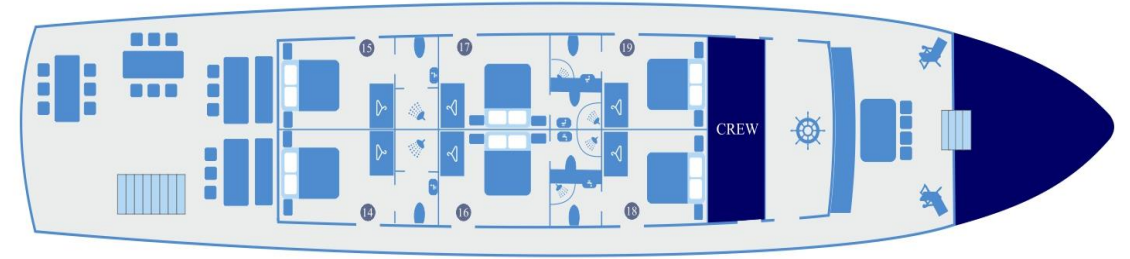
# Floor plan



STANDARD DECK



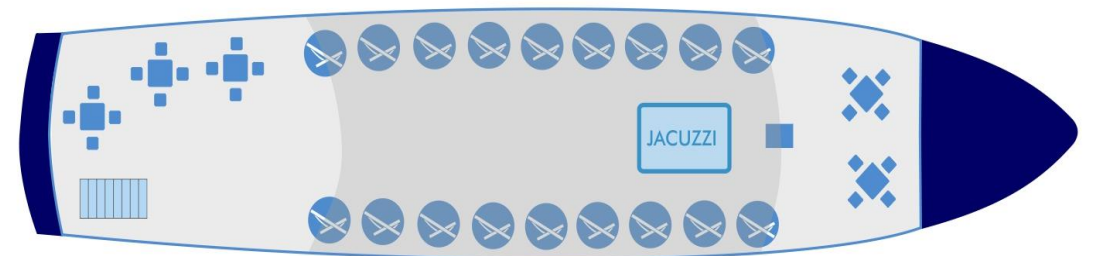
UPPER DECK



MAIN DECK



SUNNY DECK



# Technical specifications

- **Year of construction:** 2014
- **Hull:** Steel boat
- **Length over all:** 38,50 m
- **Beam:** 8,00 m
- **Engine:** 2 x 350 HP
- **Generators:** 3
- **Cruising speed:** 9,00 knots
- **Flag:** Croatian
- **Officers and staff nationality:** Croatian
- **Ship category:** Premium Superior
- **Cabins:** 18 + 1
  - 6 cabins on upper deck with windows (twin or double cabin configuration)
  - 4 cabins on main deck with windows (twin or double cabin configuration, 2 cabins can be triples with bunk bed)
  - 1 cabin on main deck with double bed for solo use, 140x200
  - 8 cabins on standard deck with portholes (twin or double cabin configuration)
- **Cabin sizes:** 9-11 m<sup>2</sup>
- **Cabins/berths:** 19/39
- **Number of crew:** 6